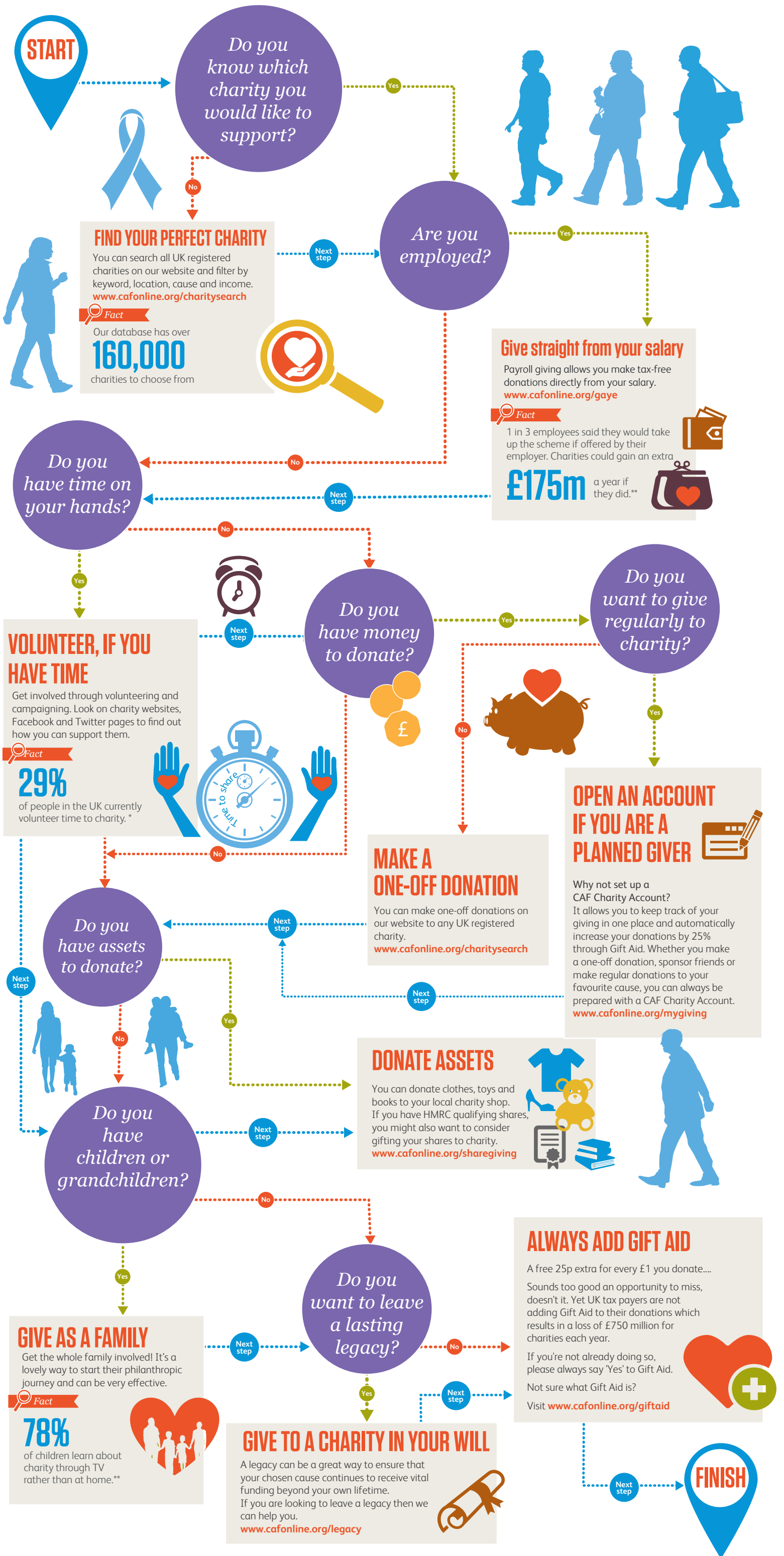


A SIMPLE GUIDE TO SAVVY CHARITABLE GIVING

Did you know that last year, 76% of Britons gave money to charity in a typical month?

Giving to charity is a personal and often emotional act. Getting it right is important. Use our simple decision tree to help you make contributions to charity in a way that best suits you.



Charities Aid Foundation is a charity dedicated to getting the best for our donors and the charities they support. We offer a number of products and services to help donors give more effectively to charity. Find out more about Charities Aid Foundation by visiting our website: www.cafonline.org

*https://www.cafonline.org/PDF/WorldGivingIndex2013_1374AWEb.pdf
 **<https://www.growinggiving.org.uk/assets/files/GUG-PART-Web.pdf>